

## WHAT IS INCLUDED IN THE PRICE?

### IN THE USA

1. FAA medical
2. All study books and materials
3. FAA written examination knowledge test
4. FAA certification fees
5. All ground school fees
6. All pre and post flight briefings
7. RT course and test
8. Training and structured solo flying to total 150 hours, including FAA PPL, night rating and JAA conversion

### Flight Training

1. 17 hours single engine (commercial module)
2. 11 hours multi engine (commercial module)
3. 40 hours simulator (IR Module)
4. 15 hours multi engine (IR Module)

### Not Included

1. Class 1 medical
2. CAA flight test and examination fees
3. Aircraft hire for tests
4. Accommodation fees\*
5. Flights to and from USA and transfers
6. Landing and approach fees in UK
7. 170A test fee
8. Licence issue fees
9. Headset

\* Very competitive accommodation can be arranged both in the USA, Bristol and Leeds. Flight times are minimum hours. Extra hours at published hourly rate.

### IN THE UNITED KINGDOM

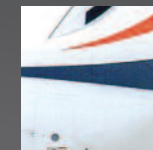
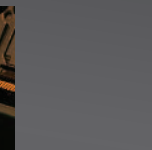
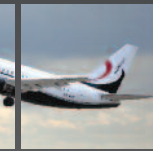
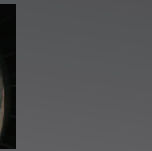
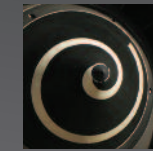
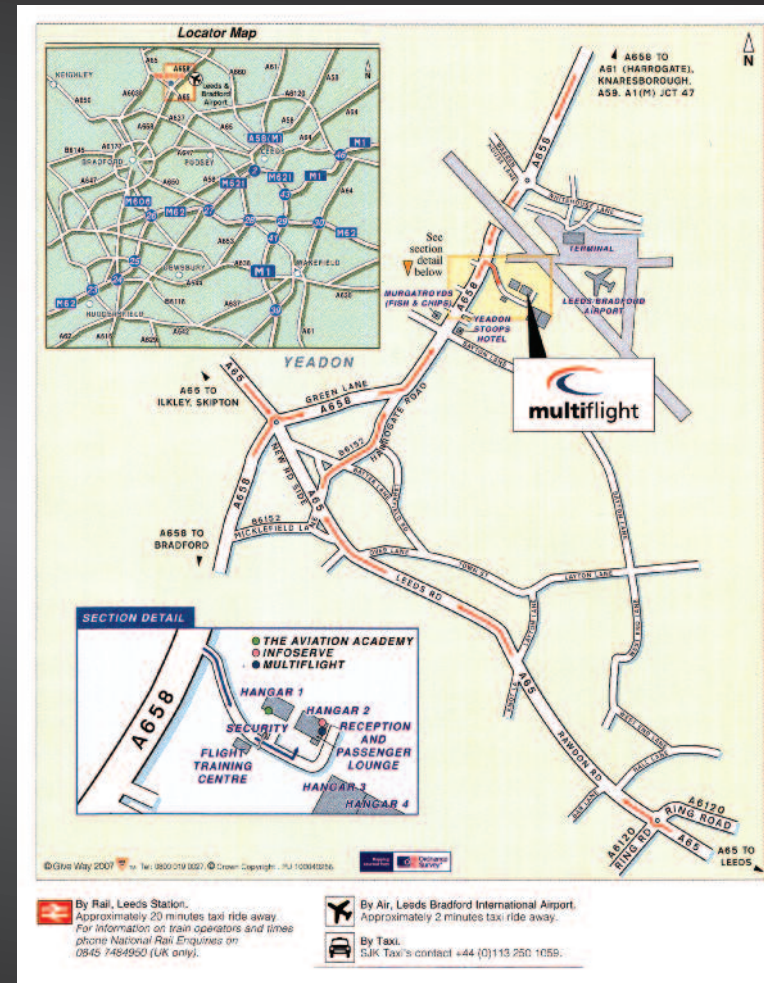
#### Ground School

1. All study material for the ATPL theoretical knowledge examinations
2. 2 x 2 week ground schools at Bristol
3. Internet and email support



For further details or to enquire about course availability, contact the Flight Training Centre on +44(0)113 238 7130 or email [information@multiflight.com](mailto:information@multiflight.com)

## HOW TO FIND US



**Flight Training Centre**  
 Multiflight Ltd. South Side Aviation Centre, Leeds Bradford Int'l Airport,  
 Leeds, United Kingdom, LS19 7UG  
 Tel: +44 (0) 113 238 7130

[multiflight.com](http://multiflight.com)



Modular Ab-Initio ATPL Training

# ATPL Training

## MULTIFLIGHT

The Multiflight Flight Training Centre at Leeds Bradford International Airport offers Modular Ab-Initio ATPL Training.

The route that you choose for your professional flight training is influenced by many factors. The major concerns for most people embarking on this exciting career path are cost and time.

The Multiflight structured modular training programme is designed to minimise both the financial cost and the investment in time in achieving your goal.

In conjunction with our training partners, Bristol Ground School and Naples Air Centre, we have designed a programme that allows a committed candidate to complete it in approximately 15 months.

All the advanced flight training is done at our modern training facilities at Leeds Bradford International Airport. The Flight Training can also be completed at our Blackpool base, if it is more convenient.

We are very proud of our pass rates, which are consistently extremely high for both the Commercial Pilot's Licence and Instrument Rating. Over 95% of our students achieved first series passes on the Instrument Rating course in the last year.

We offer professional flight training seven days a week.

If you would like to discuss the courses in further detail please contact the Flight Training Centre on +44 (0)113 238 7130 or [information@multiflight.com](mailto:information@multiflight.com)

## BRISTOL GROUND SCHOOL

Multiflight has chosen Bristol Ground School to provide the training for the ATPL written exams. Bristol is widely regarded as offering not only the highest quality distance learning package for the ATPL exams, but also the best value for money.

This section of the course is undertaken in two modules, each incorporating a distance learning phase of three to six months with two weeks of classroom work just before the exams.

The distance learning phase is supported by a computer-based training system with telephone and email access to tutors. The classroom element is mandatory for those on approved courses.

## NAPLES AIR CENTRE

Naples Air Centre is based at Naples on the west coast of Florida. It offers Approved JAA Pilot Training by approved and highly experienced instructors.

Naples Air Centre offers an extremely high standard of training and it is their superb reputation and facilities that make them our training partner for the initial flight training and structured hours building.

It is important to note that under the Joint Aviation Authority (JAA) regulations, you cannot start the commercial training module until you have completed all the ground school. You cannot present yourself for the CPL skill test until you have passed ALL the theoretical knowledge exams.



**"Flight training at Multiflight is the most enjoyable and exhilarating thing I have ever done."**

*Multiflight PPL, CPL and IR student  
Richard Wheatley.*

**"I can honestly say that nothing I have seen comes close to flight training at Multiflight: I have recommended Multiflight to friends who have been equally impressed."**

*Multiflight PPL, CPL and IR student  
Andrew Binns.*



